



WESTERN

MAY 2018

GRDC™ GROWNOTES™



GRDC™

GRAINS RESEARCH
& DEVELOPMENT
CORPORATION

TRITICALE

SECTION 13

STORAGE

CONSIDERATIONS FOR WA GROWERS | HOW TO STORE PRODUCT ON-FARM
| STORED GRAIN PESTS | GRAIN PROTECTANTS FOR STORAGE | AERATION
DURING STORAGE

Storage

Key messages

- Long term on-farm storage of triticale will be a problem unless the storage facility is sealed silos.
- Triticale grain is softer than wheat and barley grain. Soft grain is more prone to attack from weevils and other grain storage insects.
- Maintain grain at low (<10%) moisture content to minimise insect infestation.
- Fumigation prior to storage in sealed silos is effective in reducing the risk of insect damage when storing triticale. ¹
- Storing grain at levels less than 12% does not eliminate the need for treating it with insecticide, however it does avoid spoilage from mould and fungus growth. ²
- It is recommended to use a protectant when storing triticale post-harvest. Aeration is recommended when storing triticale. ³

Drying and storage of triticale is similar to wheat or rye, however, triticale is extremely sensitive to grain insect infestations, far more so than wheat, and even more so than barley (Photo 1). Care must be taken in regard to long term storage of triticale grain.

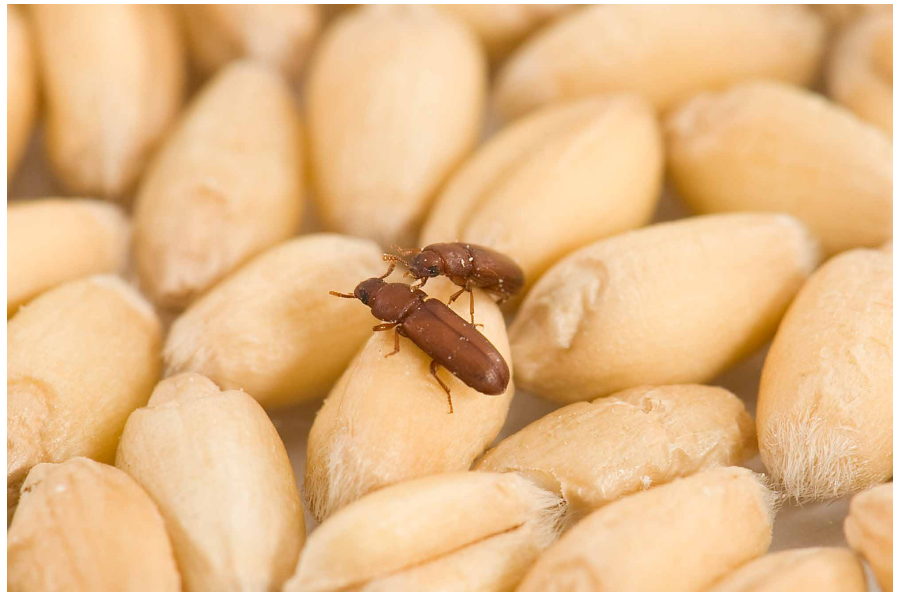


Photo 1: *Rust-red flour beetle on cereal grain.*

Source: [DAFWA](#)

Triticale has a very soft-textured kernel and may be subject to damage from insect infestation during the storage process. Triticale should be stored in dry, well-ventilated area to reduce potential damage from moisture. Preferred harvest moisture to reduce damage due to heating caused by moulding is 12% or less. ⁴

Triticale should be less than 12% moisture when stored, but the lower the moisture content the better. Storing grain at levels less than 12% does not eliminate the need for treating it with insecticide, however it does avoid spoilage from mould and fungus growth. ⁵

1 Agriculture Victoria. (2012). Growing Triticale. <http://agriculture.vic.gov.au/agriculture/grains-and-other-crops/crop-production/growing-triticale>

2 Waratah Seed Co. Ltd. (2010) Triticale: planting guide. http://www.porkcra.com.au/1A-102_Triticale_Guide_Final_Fact_Sheets.pdf

3 Waratah Seed Co. Ltd. (2010) Triticale: planting guide. http://www.porkcra.com.au/1A-102_Triticale_Guide_Final_Fact_Sheets.pdf

4 Mergoum, M., & Macpherson, H. G. (2004). *Triticale improvement and production* (No. 179). Food & Agriculture Org

5 Waratah Seed Co. Ltd. (2010) Triticale: planting guide. http://www.porkcra.com.au/1A-102_Triticale_Guide_Final_Fact_Sheets.pdf

It is recommended to use a protectant when storing triticale post-harvest. Aeration is recommended when storing triticale. ⁶

When storing triticale it is critical to pay attention to:

- Truck, auger, silo or storage bin hygiene
- Grain temperature
- Grain moisture content
- Grain insecticide treatment
- Monitoring the storage regularly.

Seek professional advice about storing triticale to reduce the risk of insect infestation and significant grain losses.

Newer varieties are generally of a harder seed type but they still require careful grain protection during storage. Maximum moisture content for triticale grain storage is 12% and aeration cooling is one way to reduce insect problems. Chemical protectants are also usually needed in triticale storage. ⁷

Triticale may also fungal development. Some triticales show high levels of enzymatic activity, even in the absence of visual sprouting or spike wetting. This greater than normal enzymatic activity in sprouted grain may promote fungal development during storage or may have deleterious effects on the food-processing characteristics of grain. ⁸

13.1.1 Considerations for WA growers

Whether storing harvested grain for future marketing or crop planting, key factors to consider are silo hygiene and aeration, insect and pest control, grain quality and economics.

Without attention to detail, there are risks of:

- Grain quality issues in some areas that experienced a wet start to harvest this year
- Development of resistant stored grain insect pests in WA

Importance of storage facility hygiene and preparation

WA is the only Australian state able to export its entire grain harvest without the use of contact insecticides.

Local research shows that correct grain storage hygiene and aeration practices can suppress stored grain insects and pests and maintain grain quality to boost seed viability for subsequent crop plantings.

Grain residue in storage facilities needs to be removed, as it provides ideal breeding sites for grain pests. Only a handful of grain is enough to maintain a viable insect population.

The Department of Agriculture and Food, Western Australia (DAFWA) says treating silos with products such as diatomaceous earth (DE) dust (e.g. Dryacide®) before storing grain is valuable.

It suggests growers be aware of withholding periods if treating the inside of empty silos with an insecticide, such as Malathion dust/liquid, to provide residual control before grain is loaded into the store.

It is illegal to apply protectants other than Malathion and Dryacide® to grain in WA, except if it is to be used for seed.

Before storing grain, gas-tight sealable silos should also be tested for any gas leaks and pressure relief valves filled with light hydraulic oil.

⁶ Waratah Seed Co. Ltd. (2010) Triticale: planting guide. http://www.porkcra.com.au/1A-102_Triticale_Guide_Final_Fact_Sheets.pdf

⁷ Jessop RS, Fittler M. (2009). Triticale production Manual – an aid to improved triticale production and utilisation. http://www.apri.com.au/1A-102_Final_Research_Report.pdf

⁸ Mergoum, M., & Macpherson, H. G. (2004). *Triticale improvement and production* (No. 179). Food & Agriculture Org..

For a silo to meet the Australian Standard 2628 – covering suitability to fumigate with phosphine – it must be subjected to a five minute, half-life pressure test when newly installed and a three minute half-life pressure test if already established.

If it meets the pressure test requirements, it will hold phosphine gas and other fumigants at a concentration high enough and for long enough to kill insects at all life stages (eggs, larvae and pupae).

Reducing reliance on phosphine fumigations

Phosphine gas can only be used for grain that is stored in tested gas-tight silos and it is highly effective - but must be held at a lethal concentration for 7–10 days to kill insects at all growth stages.

There have been six documented detections of grain storage insects with strong phosphine resistance in WA (all of which have been eradicated), highlighting the need for correct fumigation and less reliance on this fumigant.

DAFWA says poor fumigation will result in only adults being killed and numbers building-up again from infestations from immature eggs and pupae.

It says in poorly maintained seed and storage silos, inadequate fumigation time promotes the selection of phosphine resistant individuals that survive and multiply.

Detecting phosphine resistant grain pests early will make eradication possible.

A free resistance test for grain pests is available from DAFWA - contact Nuccia Eyres or [David Cousins](#) from the Department's stored grain insect group: 08 9368 3920.

GRDC's [Grain Fumigation Guide Fact Sheet](#) provides advice on application rates, handling advice, where and when to apply and tips on gas venting.

Storing high moisture and sprouted grain

Typical harvest temperatures of 25–30°C and grain moisture content of more than 13–14% provide ideal conditions for mould and insect growth during storage.

The key to dealing with high moisture and sprouted grain is to act quickly and effectively.

GRDC's [Dealing with high moisture grain Fact Sheet](#) outlines a range of management strategies, including:

- Daily monitoring of grain moisture and temperature for early detection of any mould or insects
- Blending high and low moisture grain evenly to achieve an average 12.5% moisture and aerating
- Using aeration cooling for grain with moderate moisture (up to 15% moisture content) for up to two months until drying equipment is available
- Using aeration drying in storage facilities at airflow rates of more than 15 litres per second per tonne
- Potentially using dedicated batch or continuous flow dryers for high moisture grain before storage.

Sprouted grain can be retained for seed, but it is best to use grain with a falling number of more than 150 and only retain this seed for one summer – as its ability to germinate will deteriorate faster than sound grain. There is also some evidence of reduced seedling vigour.

The [South East Premium Wheat Growers Association \(SEPWA\)](#) has produced booklets called *'Dealing with a Difficult Harvest'* and *'The WA Guide to High Moisture Harvest Management'* and these recommend minimal handling and using cool, aerated conditions when storing sprouted grain.

Aerating stored grain

A combination of good hygiene and well-managed aeration cooling during grain storage offers harvest flexibility, more marketing opportunities, better control of grain quality and potentially higher viability of seed grain for subsequent plantings.

Aeration of stored grain creates a low temperature in the silo to prevent mould, inhibit insect development, maintain seed viability and reduce grain moisture.

Insects rely on the environmental temperature for body warmth and will breed faster in warmer conditions.

If the temperature is below 20°C, they will produce less progeny in the storage period. But to stop reproduction, grain temperatures need to be below 14°C.

Through its Grain Storage Extension Project, GRDC has produced a [Grains Industry Guide to Aerating Stored Grain](#) that outlines cooling, drying and equilibrium tables and a [Fact Sheet](#).

Economics of grain storage

Grain storage is a long term investment and its viability is unique to every grower.

A cost benefit analysis is useful to compare the expected returns from grain storage versus expected returns from other farm business investments.

A comparison of the cost of storing grain on farm versus paying a bulk handler to store it is also worthwhile.

Observations made by the GRDC Grain Storage Extension Project team indicate growers who are taking a planned approach to on-farm grain storage and are doing it well are being rewarded for it.

They say grain buyers are seeking out growers with well-designed storage systems that enable delivery of insect-free, quality grain without delay.

An example of this in WA is the Candeloro family, who store 85 per cent of grain (including wheat, canola and barley) produced annually on their 8000ha Toodyay property in state-of-the-art storage and handling facilities that have a capacity of 38,000 tonnes.

The aim is to capture premium prices by supplying quality grain direct to end users and their customers include Inghams Enterprises, Milne Feeds and West Coast Milling.

The Candeloros say another big advantage of an on-farm storage system is the opportunity to back-load trucks carting grain with fertiliser and lime, which spreads haulage costs across the grain enterprise.⁹

13.2 How to store product on-farm

On-farm grain storage represents a significant investment. Many farms have older storage facilities that cannot be sealed for grain fumigation purposes but replacing these facilities with sealable silos may not be an economically viable option.

A mixed storage strategy could be the solution. The strategy is to purchase a small number of sealable silos and to use them to batch fumigate grain prior to sale.

There are several reasons why growers might consider storing grain on farm including:

- improving harvest logistics
- taking advantage of higher grain prices some time after harvest
- supplying a local market (e.g. feedlot, dairy etc)
- avoiding high freight costs at peak time
- value adding through cleaning, drying or blending grain

⁹ Williams M. (2015). Tips and tools for grain storage this harvest. <https://grdc.com.au/news-and-media/news-and-media-releases/west/2015/10/tips-and-tools-for-grain-storage-this-harvest>

SECTION 13 TRITICALE

[TABLE OF CONTENTS](#)
[FEEDBACK](#)

- retaining planting seed
- and potentially other site-specific benefits.

In most cases, for on-farm storage to be economical it will need to deliver on more than one of these benefits (Table 1). Under very favourable circumstances grain storage facilities can pay for themselves within a few years but it is also possible for an investment in on-farm storage to be very unprofitable. The grain storage cost-benefit [analysis template](#) is very useful step in the decision-making process to test the viability of grain storage on your farm.¹⁰

Table 1: Advantages and disadvantages of grain storage options.

Storage Type	Advantages	Disadvantages
Gas-tight sealable silo	<ul style="list-style-type: none"> Gas-tight sealable status allows phosphine and controlled atmosphere options to control insects Easily aerated with fans Fabricated on-site or off-site and transported Capacity from 15 tonnes up to 3000 tonnes Up to 25 year plus service life Simple in-loading and out-loading Easily administered hygiene (cone base particularly) Can be used multiple times in-season 	<ul style="list-style-type: none"> Requires foundation to be constructed Relatively high initial investment required Seals must be regularly maintained Access requires safety equipment and infrastructure Requires an annual test to check gas-tight sealing
Non-sealed silo	<ul style="list-style-type: none"> Easily aerated with fans 7–10% cheaper than sealed silos Capacity from 15 tonnes up to 3000 tonnes Up to 25 year plus service life Can be used multiple times in-season 	<ul style="list-style-type: none"> Requires foundation to be constructed Silos cannot be used for fumigation – see phosphine label Insect control options limited to protectants in eastern states and and dryacide in WA. Access requires safety equipment and infrastructure

¹⁰ GRDC, (2015). Grain storage strategies in the northern region. <https://grdc.com.au/Media-Centre/Hot-Topics/Grain-storage-strategies-in-the-northern-region>

SECTION 13 TRITICALE

TABLE OF CONTENTS

FEEDBACK

Storage Type	Advantages	Disadvantages
Grain storage bags	<ul style="list-style-type: none"> Low initial cost Can be laid on a prepared pad in the paddock Provide harvest logistics support Can provide harvest segregation options Are all ground operated Can accommodate high-yielding seasons 	<ul style="list-style-type: none"> Requires purchase or lease of a loader and unloader Increased risk of damage beyond short-term storage (typically three months) Limited insect control options, fumigation only possible under specific protocols Requires regular inspection and maintenance which needs to be budgeted for Aeration of grain in bags currently limited to research trials only Must be fenced off Prone to attack by mice, birds, foxes etc Limited wet weather access if stored in paddock Need to dispose of bag after use Single-use only
Grain storage sheds	<ul style="list-style-type: none"> Can be used for dual purposes 30 year plus service life Low cost per stored tonne 	<ul style="list-style-type: none"> Aerating systems require specific design Risk of contamination from dual purpose use Difficult to seal for fumigation Vermin control is difficult Limited insect control options without sealing Difficult to unload

Source: Kondinin Group

Growers might only plan to store grain on-farm for a short time, but markets can change, so investing in gas-tight sealable structures means you can treat pests reliably and safely and leave your business open to a range of markets.

Growers should approach storage as they would purchasing machinery:

Growers spend a lot of time researching a header purchase to make sure it is fit-for-purpose. Grain storage can also be a significant investment, and a permanent one, so it pays to have a plan that adds value to your enterprise into the future.

Decide what you want to achieve with storage, critique any existing infrastructure and be prepared for future changes: A good storage plan can remove a lot of stress at harvest – growers need a system that works so they capture a better return in their system. ¹¹

Agronomist's view

¹¹ GRDC. (2015). Ground cover issue 119 – Grain storage. Extension tailored for regional challenges. <https://grdc.com.au/Media-Centre/Ground-Cover-Supplements/Ground-Cover-Issue-119--Grain-storage/Extension-tailored-for-regional-challenges>

13.2.1 Silos

Triticale is very prone to damage from insects during storage due to its soft kernel. To minimise insect attack, the grain should be stored at less than 10% moisture, preferably in sealed silos (Photo 2). Treat the grain as it enters the silo and then check regularly (2–3 months) for reinfestation by grain insects.



Photo 2: When using on-farm silos it is important to pressure test all silos, even those that are labeled as ‘sealed’.

Source: [GRDC](#)

Sealed silos offer a more permanent grain storage option than grain storage bags. Depending on the amount of storage required, they will have a higher initial capital cost than grain storage bags and are depreciated over a longer time frame than the machinery required for the grain bags. In a silo grain storage system as stored tonnage increases the capital cost of storage increases.

Potential advantages of using sealed grain silos as a method for grain storage include improved harvest management, reduced harvest stress, reduced harvest freight requirements, minimal insecticide exposure and the opportunity to segregate and blend grain.

Potential disadvantages of using sealed grain silos as a method for grain storage include the initial capital outlay, the outlay required to meet occupational health and safety requirements, the additional on farm handling required and the additional site maintenance requirements.¹²

Pressure testing

- A silo sold as a ‘sealed silo’ needs to be pressure tested to be sure it’s gas-tight.
- It is strongly recommended that growers ask the manufacturer or reseller to quote the AS2628 on the invoice as a means of legal reference to the quality of the silo being paid for.
- Pressure test sealed silos upon erection, annually and before fumigating with a five-minute half-life pressure test.
- Maintenance is the key to ensuring a silo purchased as sealable can be sealed and gas-tight.

A silo is only truly sealed if it passes a five-minute half-life pressure test according to the Australian Standard AS2628. Often silos are sold as sealed but are not gas-tight — rendering them unsuitable for fumigation.

¹² Francis J. (2006). An analysis of grain storage bags, sealed grain silos and warehousing for storing grain.

SECTION 13 TRITICALE

TABLE OF CONTENTS

FEEDBACK

MORE INFORMATION

[GRDC Pressure testing sealable silos factsheet.](#)

[GRDC Silo buyer's guide](#)

VIDEOS

WATCH: [Pressure testing sealed silos.](#)



Even if a silo is sold as 'sealed' it is not sealed until it is proven gas-tight with a pressure test.

The term 'sealed' has been used loosely during the past and in fact some silos may not have been gas-tight from the day they were constructed.

However, even a silo that was gas-tight to the Australian Standard on construction will deteriorate over time so needs annual maintenance to remain gas-tight.

Why do I need to do a pressure test?

In order to kill grain pests at all stages of their life cycle (egg, larvae, pupae, adult), phosphine gas concentration levels need to reach and remain at 300 parts per million (ppm) for seven days or 200ppm for 10 days.

The importance of a gas-tight silo

The Kondinin Group 2009 National Agricultural survey revealed that 85% of respondents had used phosphine at least once during the previous 5 years, and of those users, 37% used phosphine every year for the past 5 years. A Grains Research and Development Corporation survey during 2010 revealed that only 36% of growers using phosphine applied it correctly, in a gas-tight, sealed silo (Figure 1). Research shows that fumigating in a storage that does not meet the industry standard 'silo pressure test' does not achieve a high enough concentration of fumigant for a long enough period to kill pests at all life-cycle stages (Figure 2). For effective phosphine fumigation, a minimum of 300 parts per million (ppm) gas concentration for 7 days or 200 ppm for 10 days is required. Fumigation trials in silos with small leaks demonstrated that phosphine levels are as low as 3 ppm close to the leaks. The rest of the silo also suffers from reduced gas levels.¹³

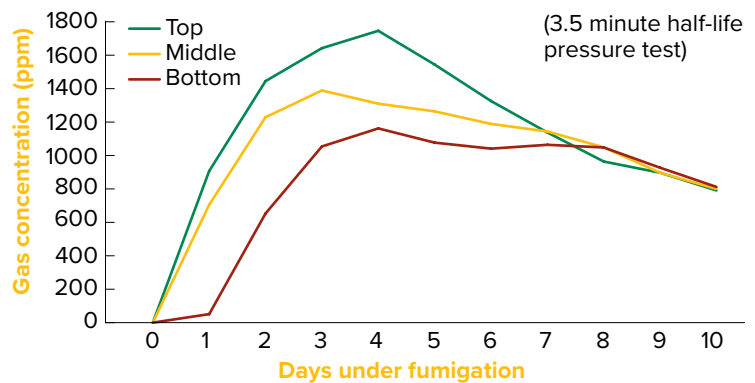


Figure 1: Gas concentration in gas-tight silo.

Source: [GRDC](#)

¹³ P Botta, P Burrill, C Newman (2010) Pressure testing sealable silos. GRDC Fact Sheet, September 2010, <http://storedgrain.com.au/pressure-testing/>

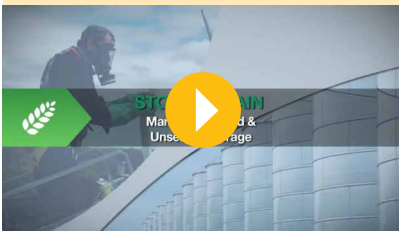
SECTION 13 TRITICALE

TABLE OF CONTENTS

FEEDBACK

VIDEOS

WATCH: [Stored grain: Managing sealed and unsealed storage.](#)



MORE INFORMATION

[Fumigating with phosphine, other fumigants and controlled atmospheres](#)

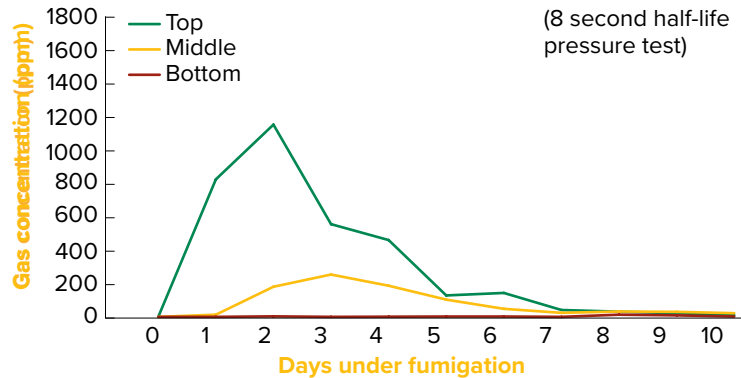


Figure 2: Gas concentration in non-gas-tight silo.

Source: [GRDC](#)

It is recommended to pressure-test silos that are sealable once a year to check for damaged seals on openings. Storages must be able to be sealed properly to ensure effective fumigation.

There is no compulsory manufacturing standard for sealed silos in Australia. A voluntary industry standard was adopted in 2010. Watch this [GRDC Ground Cover TV](#) clip to find out more.

13.2.2 Grain bags

Grain storage bags are relatively new technology offering a low cost alternative for temporary storage of grain to permanent grain storage structures on farm such as silos. Grain storage bags are made of multilayer polyethylene material similar to that used in silage fodder systems. Bags typically store between 200 and 220 tonnes of cereal grain and are filled and emptied using specialised machinery (Photo 3). The bags are sealed after filling producing a relatively airtight environment which, under favourable storage conditions, protects grain from insect damage without the use of insecticides.

Potential advantages of using grain storage bags as a method for grain storage include the low capital set up costs, improved harvest management, less harvest stress, reduced harvest freight requirements, minimal cost in occupational health and safety (OH&S) requirements, reduced grain insecticide requirements and the opportunity to segregate and blend grain.

Potential disadvantages of using grain storage bags as a method for grain storage include the requirement for disposal of used bags, the period of storage before bag deterioration and the management necessary to ensure bag integrity. Another potential disadvantage of this system, when compared to permanent structures, is that once the storage period is complete there is no asset value in the storage system other than the bagging machinery.¹⁴

¹⁴ Francis J. (2006). An analysis of grain storage bags, sealed grain silos and warehousing for storing grain.

SECTION 13 TRITICALE

TABLE OF CONTENTS

FEEDBACK

VIDEOS

WATCH: [Grain bags best practice.](#)



WATCH: [Extension Files: Grain bags – a grower's perspective.](#)

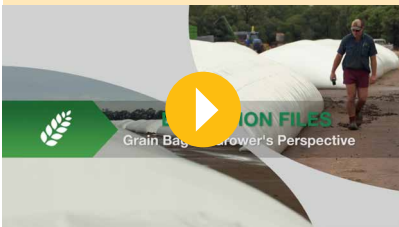


Photo 3: A 100m bag can be filled in 30 minutes with a constant supply of grain.

Source: [StarTribune](#)

13.2.3 Hygiene

Always thoroughly clean trucks, augers and storages prior to storing triticale. Dust and grain from previous years grain should all be totally removed to avoid rapid infestation with stored-grain insects.¹⁵

13.2.4 Insecticide treatment

There are three options for insecticide treatment:

- Chemical protectant: applied directly to the grain; used to treat uninfested grain; protect for three to nine months depending on product
- Fumigation: only in a sealed silo; fumigant in tray or sachet in head-space of silo not in contact with grain; residue free; minimises insect resistance to chemicals
- Aeration cooling: residue free; lowers temperature of grain; reduces potential of insect infestation.

13.2.5 Monitoring stored grain

Check the grain regularly during storage for signs of grain insect activity and be prepared to deal with an infestation if it occurs.¹⁶

Monitoring grain temperature and moisture content:

- Pests and grain moulds thrive in warm, moist conditions. Monitor grain moisture content and temperature to prevent storage problems.
- Use a grain temperature probe to check storage conditions and aeration performance (Photo 4).
- When checking grain, smell air at the top of storages for signs of high grain moisture or mould problems.
- Check germination and vigour of planting seed in storage.
- Aeration fans can be used to cool and dry grain to reduce storage environment problems.

It is vital to monitor grain moisture content to prevent pests and grain moulds from thriving.¹⁷

¹⁵ Waratah Seed Co. Ltd. (2010) Triticale: planting guide. http://www.porkcra.com.au/1A-102_Triticale_Guide_Final_Fact_Sheets.pdf

¹⁶ Waratah Seed Co. Ltd. (2010) Triticale: planting guide. http://www.porkcra.com.au/1A-102_Triticale_Guide_Final_Fact_Sheets.pdf

¹⁷ Plant Health Australia. (2015). Monitoring stored grain on farm.



Photo 4: Monitor moisture and temperature using a digital probe from both the top and the bottom of silos, if safe to do so.

Source: Plant Health Australia

13.2.6 Grain storage – get the economics right

As growers continue to expand their on-farm grain storage, the question of economic viability gains significance. There are many examples of growers investing in on-farm grain storage and paying for it in one or two years because they struck the market at the right time, but are these examples enough to justify greater expansion of on-farm grain storage?

The grain storage extension team conduct approximately 100 grower workshops every year, Australia wide and it's evident that no two growers use on-farm storage in the exact same way. Like many economic comparisons in farming, the viability of grain storage is different for each grower. Depending on the business's operating style, the location, the resources and the most limiting factor to increase profit; grain storage may or may not be the next best investment. For this reason, everyone needs to do a simple cost benefit analysis for their own operation.

Comparing on-farm grain storage

To make a sound financial decision, we need to compare the expected returns from grain storage versus expected returns from other farm business investments, such as more land, a chaser bin, a wider boomspray, a second truck or paying off debt. The other comparison is to determine if we can store grain on-farm cheaper than paying a bulk handler to store it for us.

Calculating the costs and benefits of on-farm storage will enable a return-on investment (ROI) figure, which can be compared with other investment choices and a total cost of storage to compare to the bulk handlers.

Cheapest form of storage

The key to a useful cost–benefit analysis is identifying which financial benefits to plan for and costing an appropriate storage to suit that plan. People often ask, “what’s the cheapest form of storage?” The answer is the storage that suits the planned benefits. Short term storage for harvest logistics or freight advantages can be suited to grain bags or bunkers. If flexibility is required for longer term storage, gas-tight, sealable silos with aeration cooling allow quality control and insect control.

Benefits

To compare the benefits and costs in the same form, work everything out on a basis of dollars per tonne. On the benefit side, the majority of growers will require multiple financial gains for storing grain to make money out of it. These might include harvest logistics or timeliness, market premiums, freight savings or cleaning, blending, or drying grain to add value.

Costs

The costs of grain storage can be broken down into fixed and variable. The fixed costs are those that don't change from year to year and have to be covered over the life of the storage. Examples are depreciation and the opportunity or interest cost on the capital. The variable costs are all those that vary with the amount of grain stored and the length of time it's stored for. Interestingly, the costs of good hygiene, aeration cooling and monitoring are relatively low compared to the potential impact they can have on maintaining grain quality. One of the most significant variable cost, and one that is often overlooked is the opportunity cost of the stored grain. That is the cost of having grain in storage rather than having the money in the bank paying off an overdraft or a term loan.

The result

While it's difficult to put an exact dollar value on each of the potential benefits and costs, a calculated estimate will determine if it's worth a more thorough investigation. If we compare the investment of on-farm grain storage to other investments and the result is similar, then we can revisit the numbers and work on increasing their accuracy. If the return is not even in the ball park, we've potentially avoided a costly mistake. On the contrary, if after checking our numbers the return is favourable, we can proceed with the investment confidently.

Summary

Unlike a machinery purchase, grain storage is a long term investment that cannot be easily changed or sold. Based on what the grain storage extension team are seeing around Australia, the growers who are taking a planned approach to on-farm grain storage and doing it well are being rewarded for it. Grain buyers are seeking out growers who have a well-designed storage system that can deliver insect free, quality grain without delay.

Table 2 is a tool that can be used to figure out the likely economic result of on-farm grain storage for each individual business. Each column can be used to compare various storage options including type of storage, length of time held or paying a bulk handler.¹⁸

Table 2: Cost-benefit template for grain storage.

Financial gains from storage		Example \$/t
Harvest logistics/ timeliness	Grain price x reduction in value after damage % x probability of damage %	\$16
Marketing	Post harvest grain price - harvest grain price	
Freight	Peak rate \$/t - post harvest rate \$/t	\$20
Cleaning to improve grade	Clean grain price - original grain price - cleaning costs - shrinkage	
Blending to lift average grade	Blended price - ((low grade price x %mix) + (high grade price x %mix))	
Total benefits	Sum of benefits	\$36.20
Capital cost	Infrastructure cost / storage capacity	\$155
Fixed costs		
Annualised depreciation cost	Capital cost \$/t / expected life storage eg 25yrs	\$6.20
Opportunity cost on capital	Capital cost \$/t x opportunity or interest rate eg 8% / 2	\$6.20
Total fixed costs	Sum of fixed costs	\$12.40

¹⁸ Warrick C. (2016). GRDC Update Papers: Grain storage – get the economics right. <https://grdc.com.au/Research-and-Development/GRDC-Update-Papers/2016/09/Grain-storage-get-the-economics-right>

SECTION 13 TRITICALE

[TABLE OF CONTENTS](#)
[FEEDBACK](#)

MORE INFORMATION

[GRDC Economics of on-farm grain storage, cost benefit analysis.](#)

VIDEOS

WATCH: [Over the Fence: On-farm storage delivers harvest flexibility and profit.](#)



WATCH: [Stay safe around grain storage.](#)



Financial gains from storage		Example \$/t
Variable costs		
Storage hygiene	(Labour rate \$/hr x time to clean hrs / storage capacity) + structural treatment	\$0.23
Aeration cooling	Indicatively 23c for the first 8 days then 18c per month / t	\$0.91
Repairs and maintenance	Estimate e.g. capital cost \$/t x 1%	\$1.51
Inload/outload time and fuel	Labour rate \$/hr / 60 minutes / auger rate t/m x 3	\$0.88
Time to monitor and manage	Labour rate \$/hr x total time to manage hrs / storage capacity	\$0.24
Opportunity cost of stored grain	Grain price x opportunity interest rate e.g. 8% / 12 x No. months stored	\$7.20
Insect treatment cost	Treatment cost \$/t x No. of treatments	\$0.35
Cost of bags or bunker trap	Price of bag / bag capacity tonne	
Total variable costs	Sum of variable costs	\$11.32
Total cost of storage	Total fixed costs + total variable costs	\$23.72
Profit/Loss on storage	Total benefits - total costs of storage	\$12.48
Return on investment	Profit or loss / capital cost x 100	8.1%

Source: GRDC

13.3 Stored grain pests

Key points:

- Effective grain hygiene and aeration cooling can overcome 85% of pest problems.
- When fumigation is needed it must be carried out in pressure-tested, sealed silos.
- Monitor stored grain monthly for moisture, temperature and pests.

Prevention is better than cure

The combination of meticulous grain hygiene plus well-managed aeration cooling generally overcomes 85% of storage pest problems.

For grain storage, three key factors provide significant gains for both grain storage pest control and grain quality – hygiene, aeration cooling and correct fumigation.¹⁹

Common species

The most common insect pests of stored cereal grains in Australia are (Figure 3):

- Weevils (*Sitophilus spp.*). Rice weevil is the most common weevil in cereals in Australia
- Lesser Grain Borer (*Rhizopertha dominica*)
- Rust Red Flour Beetle (*Tribolium spp.*)
- Sawtooth Grain Beetle (*Oryzaephilus spp.*)
- Flat Grain Beetle (*Cryptolestes spp.*)
- Indian Meal Moth (*Plodia interpunctella*)
- Angoumois Grain Moth (*Sitotroga cerealella*).

¹⁹ GRDC Stored Grain Information Hub. Northern and Southern Regions Grain Storage Pest control guide. <http://storedgrain.com.au/pest-control-guide-ns/>

SECTION 13 TRITICALE

TABLE OF CONTENTS

FEEDBACK

Another dozen or so beetles, psocids (booklice) and mites are sometimes present as pests in stored cereal grain.

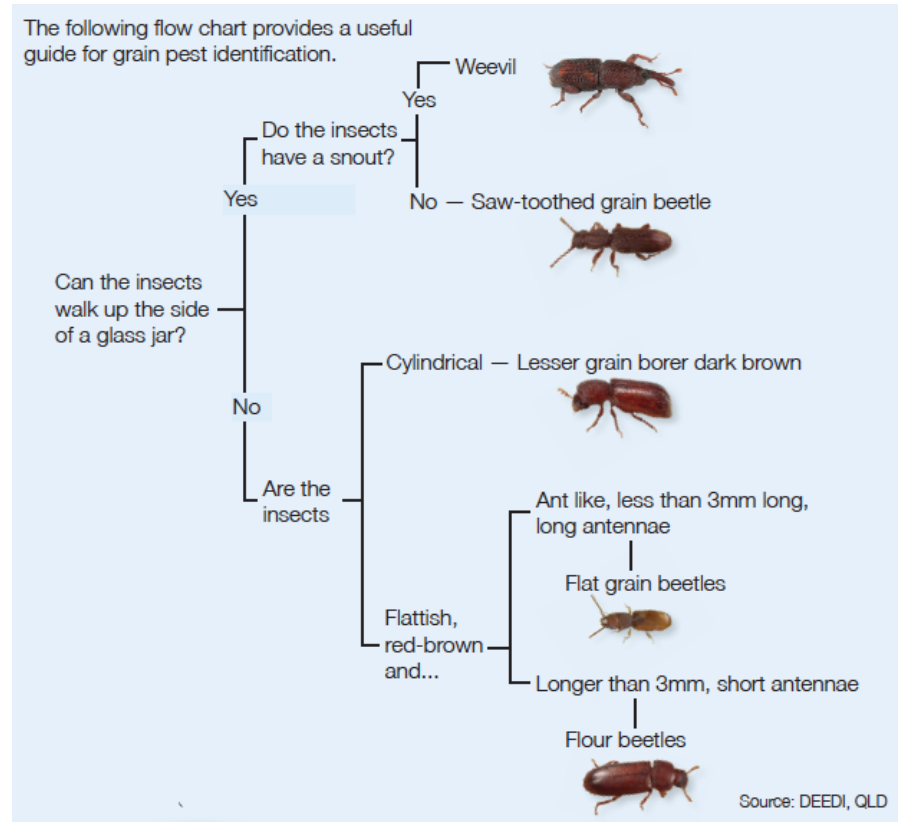


Figure 3: Identification of common pests of stored grain.

Source: GRDC

Why identify stored insect grain pests?

Most insect control methods for stored grain work against all species. So you don't need to identify the storage pests to make decisions about most control methods. But if you intend spraying grain with insecticides you may need to know which species are present if:

- A previous application has failed and you want to know whether resistance was the reason - if more than one species survived, resistance is unlikely to be the cause.
- You intend using a residual protectant to treat infested grain - pyrimiphos-methyl, fenitrothion and chlorpyrifos-methyl are ineffective against lesser grain borer, and pyrimiphos-methyl and fenitrothion are generally ineffective against sawtoothed grain beetle.
- you intend using dichlorvos to treat infested grain - if lesser grain borer is present you need to apply the higher dose rate. This then increases the withholding period before grain can be marketed from 7 days to 28 days.

13.3.1 Monitoring grain for pests

Damage by grain insect pests often goes unnoticed until the grain is removed from the storage. Regular monitoring will help to ensure that grain quality is maintained.

- Sample each grain storage at least monthly. During warmer periods of the year fortnightly sampling is recommended.
- Take samples from the top and bottom of grain stores and sieve (using 2 mm mesh) onto a white tray to separate any insects (Photo 5).

i MORE INFORMATION

[Western region – stored grain pest identification](#)

[DAFWA – Insect pests of stored grain](#)

SECTION 13 TRITICALE

TABLE OF CONTENTS

FEEDBACK

MORE INFORMATION

[GRDC Stored grain pests; the back pocket guide](#)

VIDEOS

WATCH:[GCTV2: Grain Storage Insect ID.](#)



- Hold tray in the sunlight for 10–20 seconds to trigger movement of any insects, making them easier to see. Use a magnifying glass to identify pests.
- Grain probes or pitfall traps should also be used to check for insects. These traps are left in the grain during storage and are often able to detect the start of an infestation.
- Push probe/trap into the grain surface and pull up for inspection fortnightly/monthly. Place 1–2 traps in the top of a silo or several traps in a grain shed.
- Be sure to check grain three weeks prior to sale to allow time for treatment if required.²⁰



Photo 5: A 2 mm mesh sieve will separate insects from grain.

Source: Plant Health Australia

13.3.2 Hygiene

Key points:

- Effective grain hygiene requires complete removal of all waste grain from storages and equipment.
- Be meticulous with grain hygiene – pests only need a small amount of grain for survival.

A bag of infested grain can produce more than one million insects during a year, which can walk and fly to other grain storages where they will start new infestations. Meticulous grain hygiene involves removing any grain that can harbour pests and allow them to breed. It also includes regular inspection of seed and stockfeed grain so any pest infestations can be controlled before pests spread.

Where to clean

Removing an environment for pests to live and breed in is the basis of grain hygiene, which includes all grain handling equipment and storages. Grain pests live in dark, sheltered areas and breed best in warm conditions.

Common places where pests are found include:

- Empty silos and grain storages
- Aeration ducts, augers and conveyers
- Harvesters, field bins and chaser bins
- Left-over bags of grain trucks
- Spilt grain around grain storages
- Equipment and rubbish around storages
- Seed grain
- Stockfeed grain

²⁰ Plant Health Australia. (2015). Monitoring stored grain on farm.

Successful grain hygiene involves cleaning all areas where grain gets trapped in storages and equipment (Photo 6). Grain pests can survive in a tiny amount of grain, so any parcel of fresh grain through the machine or storage becomes infested.



Photo 6: Grain left in trucks is an ideal place for grain pests to breed. Keep trucks, field bins and chaser bins clean.

Source: [GRDC](#)

When to clean

Straight after harvest is the best time to clean grain handling equipment and storages, before they become infested with pests. One trial revealed more than 1000 lesser grain borers in the first 40 litres of grain through a harvester at the start of harvest, which was considered reasonably clean at the end of the previous season. Discarding the first few bags of grain at the start of the next harvest is also a good idea. Further studies revealed insects are least mobile during the colder months of the year. Cleaning around silos in July – August can reduce insect numbers before they become mobile.

How to clean

The better the cleaning job, the less chance of pests harbouring. The best ways to get rid of all grain residues use a combination of:

- Sweeping
- Vacuuming
- Compressed air
- Blow/vacuum guns
- Pressure washers
- Fire-fighting hoses

Using a broom or compressed air gets rid of most grain residues, a follow-up wash-down removes grain and dust left in crevices and hard-to-reach spots (Photo 7). Choose a warm, dry day to wash storages and equipment so it dries out quickly to prevent rusting. When inspecting empty storages, look for ways to make the structures easier to keep clean. Seal or fill any cracks and crevices to prevent grain lodging and insects harbouring. Bags of left-over grain lying around storages and in sheds create a perfect harbour and breeding ground for storage pests. After collecting spilt grain and residues, dispose of them well away from any grain storage areas.



Photo 7: Clean silos, including the silo wall, with air or water to provide a residue-free surface to apply structural treatments.

Source: [GRDC](#)

The process of cleaning on-farm storages and handling equipment should start with the physical removal, blowing and/or hosing out of all residues. Once the structure is clean and dry, consider the application of DE as a structural treatment. See Section 13.2.4 Structural treatments for more information.

A concrete slab underneath silos makes cleaning much easier (Photo 8).

Agronomist's view



Photo 8: Concrete slab under silo makes cleaning up spilled grain much easier.

Source: [GRDC](#)

VIDEOS

WATCH: [Grain Silo Hygiene.](#)



13.3.3 Aeration cooling for pest control

While adult insects can still survive at low temperatures, most young storage pests stop developing at temperatures below 18–20°C (see Table 3).

At temperatures below 15°C the common rice weevil stops developing.

At low temperatures insect pest life cycles (egg, larvae, pupae and adult) are lengthened from the typical four weeks at warm temperatures (30–35°C) to 12–17 weeks at cooler temperatures (20–23°C).

Photo 9: *The effect of grain temperature on insects and mould.*

Grain temp (°C)	Insect and mould development	Grain moisture content (%)
40–55	Seed damage occurs, reducing viability	
30–40	Mould and insects are prolific	>18
25–30	Mould and insects are active	13–18
20–25	Mould development is limited	10–13
18–20	Young insects stop developing	9
<15	Most insects stop reproducing, mould stops developing	<8

Source: Kondinin Group in [GRDC](#)

For more information, see Section 13.3.2 Aeration cooling below

i MORE INFORMATION

[GRDC fact sheet, Aeration cooling for pest control.](#)

13.3.4 Structural treatments

Key points:

- Structural treatments, such as diatomaceous earth (DE), can be used on storages and equipment to protect against grain pests.
- Check delivery requirements before using chemical treatments.

Chemicals used for structural treatments do not list the specific use before storing pulses on their labels and MRLs in pulses for those products are either extremely low or nil. Using chemicals even as structural treatments risks exceeding the MRL so is not recommended.

Using diatomaceous earth (DE) as a structural treatment is possible but wash and dry the storage and equipment before using for pulses. This will ensure the DE doesn't discolour the grain surface. Diatomaceous earth is an amorphous silica commercially known as Dryacide® and acts by absorbing the insect's cuticle or protective waxy exterior, causing death by desiccation. If applied correctly with complete coverage in a dry environment, DE can provide up to 12 months of protection for storages and equipment.

If unsure, check with the grain buyer before using any product that will come in contact with the stored grain.²¹

i MORE INFORMATION

[Hygiene and structural treatments for grain storages.](#)

13.3.5 Application

Inert dust requires a moving air-stream to direct it onto the surface being treated; alternatively, it can be mixed into a slurry with water and sprayed onto surface. See label directions. Throwing dust into silos by hand will not achieve an even coverage, so will not be effective. For very small grain silos and bins, a hand-operated duster, such as a bellows duster, is suitable. Larger silos and storages require a powered duster operated by compressed air or a fan. If compressed air is available, it is the most economical and suitable option for on-farm use, connected to a venturi duster such as the Blovac BV-22 gun (Photo 10).

21 GRDC Stored Grain information hub. Storing Pulses. <https://grdc.com.au/resources-and-publications/all-publications/factsheets/2014/07/grain-storage-fact-sheet-storing-pulses>

SECTION 13 TRITICALE

TABLE OF CONTENTS

FEEDBACK



Photo 10: A blow/vac or air venture gun is the best applicator for inert dusts. Aim for an event coat of diatomaceous earth across the roof, walls and base.

Photo: C. Warrick, Proadvice

The application rate is calculated at 2 g/m² surface area treated. Although inert, breathing in excessive amounts of dust is not ideal, so use a disposable dust mask and goggles during application (Table 3).

Silo application

Apply inert dust in silos, starting at the top (if safe), by coating the inside of the roof then working your way down the silo walls, finishing by pointing the stream at the bottom of the silo (Table 3). If silos are fitted with aeration systems, distribute the inert dust into the ducting without getting it into the motor, where it could cause damage.²²

Table 3: Inert dust (diatomaceous earth) application guide.

Storage capacity (t)	Dust quantity (kg)
20	0.12
56	0.25
112	0.42
224	0.60
450	1.00
900	1.70
1800	2.60

13.3.6 Fumigation

There are a number of chemical control options for the control of grain pests in stored cereals (Table 5).

Photo 11: Resistance and efficacy guide for stored grain insects. Before applying, check with your grain buyers/bulk handlers and read labels carefully.

VIDEOS

WATCH: [Applying diatomaceous earth dust.](#)



MORE INFORMATION

[GRDC Grain Storage Fact Sheet: Hygiene and Structural Treatment for Grain Storages.](#)

22 Pulse Australia (2013) Northern chickpea best management practices training course manual —2013. Pulse Australia Limited.

SECTION 13 TRITICALE

TABLE OF CONTENTS

FEEDBACK

Treatment and example product	WHP	Lesser grain borer	Rust-red flour beetle	Rice weevil	Saw-toothed grain beetle	Flat grain beetle	Psocids (booklice)	Structural treatments
Grain disinfectants—used on infested grain to control full life cycle (adults, eggs, larvae, pupae)								
Phosphine (Fumitoxin®) ^{1,3} when used in gas-tight, sealable stores	2	Effective control	Effective control	Effective control	Effective control	High-level resistance in flat grain beetle has been identified, send insects for testing if fumigation failures occur	Effective control	
Sulfuryl fluoride (ProFume®) ¹⁰	1	Effective control	Effective control	Effective control	Effective control	Effective control	Effective control	
Grain protectants—applied postharvest. Poor adult control if applied to infested grain								
Pirimiphos-methyl (Actellic 900®)	nil ²	Effective control	Effective control	Effective control	Resistance widespread (unlikely to be effective)	Effective control		Resistant species likely to survive this structural treatment for storage and equipment
Fenitrothion (Fenitrothion 1000®) ^{4,7}	1–90	Effective control	Effective control	Effective control	Resistance widespread (unlikely to be effective)	Effective control		Resistant species likely to survive this structural treatment for storage and equipment
Chlorpyrifos-methyl (Reldan Grain Protector®) ⁵	Nil ²	Resistance widespread (unlikely to be effective)	Effective control	Effective control	Resistance widespread (unlikely to be effective)	Effective control		Resistant species likely to survive this structural treatment for storage and equipment
‘Combined products’ (Reldan Plus IGR Grain Protector)	Nil ²	Resistance widespread (unlikely to be effective)	Effective control	Effective control	Resistance widespread (unlikely to be effective)	Effective control		Resistant species likely to survive this structural treatment for storage and equipment
Deltamethrin (K-Obiol®) ¹⁰	Nil ²	Effective control	Effective control	Resistance widespread (unlikely to be effective)	Effective control	Effective control		Resistant species likely to survive this structural treatment for storage and equipment
Spinosad and Chlorpyrifos-methyl (eg Conserve On-Form™) ⁹		Effective control	Effective control	Effective control	Effective control	Effective control		Resistant species likely to survive this structural treatment for storage and equipment
Diatomaceous earth, amorphous silica—effective internal structural treatment for storages and equipment. Specific-use grain treatments								
Diatomaceous earth, amorphous silica (Dryacide®) ⁸	Nil ²	Effective control	Effective control	Effective control	Effective control	Effective control		Effective control

- Not registered for this pest
- High-level resistance in flat grain beetle has been identified, send insects for testing if fumigation failures occur
- Resistant species likely to survive this structural treatment for storage and equipment
- Resistance widespread (unlikely to be effective)
- Effective control

- 1 Unlikely to be effective in unsealed sites, causing resistance, see label for definitions
- 2 When used as directed on label
- 3 Total of (exposure + ventilation + withholding) = 10 to 27 days
- 4 Nufarm label only
- 5 Stored grains except malting barley and rice/ stored lupins registration for Victoria only/ not on stored maize destined for export
- 6 When applied as directed, do not move treated grain for 24 hours
- 7 Periods of 6–9 months storage including mixture in adulticide (e.g. Fenitrothion at label rate)
- 8 Do not use on stored maize destined for export, or on grain delivered to bulk-handling authorities
- 9 Dichlorvos 500 g/L registration only
- 10 Restricted to licensed fumigators or approved users
- 11 Restricted to use under permit 14075 only. Unlikely to be practical for use on farm

Source: Registration information courtesy of Pestgenie, APVMA and InfoPest (DEED) websites
Source: GRDC

Fumigation with phosphine is a common component of many integrated pest control strategies (Photo 12).

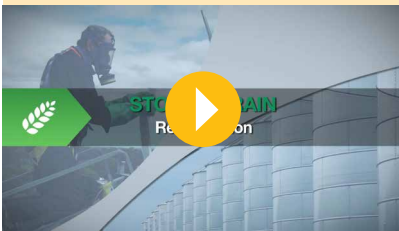
Taking fumigation shortcuts may kill enough adult insects in grain so it passes delivery standards, but the repercussions of such practices are detrimental to the grains industry.

Poor fumigation techniques fail to kill pests at all life cycle stages, so while some adults may die, grain will soon be reinfested again as soon as larvae and eggs develop.

What’s worse, every time a poor fumigation is carried out, insects with some resistance survive, making the chemical less effective in the future.

VIDEOS

WATCH: [GCTV Stored Grain: Fumigation recirculation.](#)



WATCH: [GCTV Stored Grain: Phosphine Dose Rates.](#)

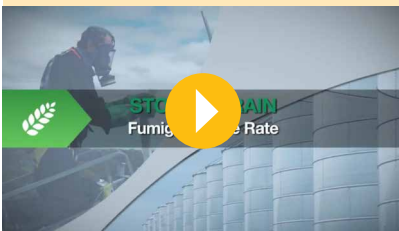


Photo 12: Phosphine is widely accepted as having no residue issues.

Photo: QDAFF

While phosphine has some resistance issues, it is widely accepted as having no residue issues for grain or pulses. The grain industry has adopted a voluntary strategy to manage the build-up of phosphine resistance in pests. Its core recommendations are to limit the number of conventional phosphine fumigations on undisturbed grain to three per year, and to employ a break strategy.²³

Phosphine application

For effective phosphine fumigation, a minimum of 300 parts per million (ppm) gas concentration for seven days or 200ppm for 10 days is required. Fumigation trials in silos with small leaks demonstrated that phosphine levels are as low as 3ppm close to the leaks. The rest of the silo also suffers from reduced gas levels.

Achieve effective fumigation by placing the correct phosphine rates (as directed on the label) onto a tray and hanging it in the top of a pressure-tested, sealed silo or into a ground level application system if the silo is fitted with recirculation.

After fumigation, ventilate grain for a minimum of one day with aeration fans running, or five days if no fans are fitted.

A minimum withholding period of two days is required after ventilation before grain can be used for human consumption or stock feed.

The total time needed for fumigating is 10–17 days.

As a general rule, only keep a silo sealed while carrying out the fumigation (for example, one to two weeks).

After fumigation has been completed, return to aeration cooling to hold the stored grain at a suitable temperature level.

Handle with care

Phosphine is a highly toxic gas with potentially fatal consequences if handled incorrectly. As a minimum requirement, the label directs the use of cotton overalls buttoned at the neck and wrist, eye protection, elbow-length PVC gloves and a breathing respirator with combined dust and gas cartridge.

²³ P Collins (2009) Strategy to manage resistance to phosphine in the Australian grain industry, Cooperative Research Centre for National Plant Biosecurity, <https://www.graintrade.org.au/sites/default/files/file/NWPGP/Phosphine%20Resistance%20Strategy.pdf>

i MORE INFORMATION

[Grain fumigation – a guide.](#)

[Fumigating with phosphine, other fumigants and controlled atmospheres: Do it right—do it once. A Grains Industry Guide'](#)

Where to apply

Arrange the tablets where as much surface area as possible is exposed to air, so the gas can disperse freely throughout the grain stack. Spread phosphine tablets evenly across trays before hanging them in the head space or placing them level on the grain surface inside a gas-tight, sealed silo. Hang bag chains in the head space or roll out flat on the top of the grain so air can freely pass around them as the gas dissipates. Bottom-application facilities must have a passive or active air circulation system to carry the phosphine gas out of the confined space as it evolves. Without air movement, phosphine can reach explosive levels if left to evolve in a confined space.

Time to kill

To control pests at all life stages and prevent insect resistance, phosphine gas concentration needs to reach 300 parts per million (ppm) for seven days (when grain is above 25°C) or 200ppm for 10 days (between 15–25°C). Insect activity is slower in cooler grain temperatures so require longer exposure to the gas to receive a lethal dose.²⁴

Non-chemical treatment options include:

- **Carbon dioxide:** Treatment with CO₂ involves displacing the oxygen inside a gas-tight silo with CO₂, which creates a toxic atmosphere to grain pests. To achieve a complete kill of all the main grain pests at all life stages, CO₂ must be retained at a minimum concentration of 35% for 15 days.
- **Nitrogen:** Grain stored under N₂ provides insect control and quality preservation without chemicals. It is safe to use and environmentally acceptable, and the main operating cost is the capital cost of equipment and electricity. It also produces no residues, so grains can be traded at any time, unlike chemical fumigants that have withholding periods. Insect control with N₂ involves a process using pressure swinging adsorption (PSA) technology, modifying the atmosphere within the grain storage to remove everything except N₂, starving the pests of oxygen.²⁵

13.4 Grain protectants for storage

Lesser grain borer's (*Rhyzopertha dominica*) widespread resistance to grain protectants is ending with the availability of deltamethrin (eg K-Obiol) and spinosad (eg Conserve On-Farm) products.

K-Obiol Combi

K-Obiol is a synergised grain protectant for use on cereal grains, malting barley and sorghum. It can be used in any type of storage, sealed or unsealed. It is suitable for use by grain growers and grain accumulators. Like all protectants it is a liquid and must be evenly applied as a dilution to the grain as it is fed into the storage. It is not suitable for oil seeds or pulses. It is for use on un-infested grain and is not recommended for eradicating insect pests when they have infested grain.

The active constituent is deltamethrin. Piperonyl butoxide is added as a synergist; meaning it increases the effectiveness of the deltamethrin. As K-Obiol is based on deltamethrin there are none of the insect resistance problems being experienced with other protectants.

Because protectants are residual there can be concern by grain users that the grain does not contain excessive levels. This may come about from incorrect treatment or double treatment as the grain moves along the supply chain. To protect the end user of the grain, and ultimately the Australian grain growers, a Product Stewardship program has been developed to ensure correct use of the product. The Program will

24 GRDC Stored Grain Information Hub. Grain Fumigation – A guide. <http://storedgrain.com.au/fumigation-guide/>

25 C Warrick (2012) Fumigating with phosphine, other fumigants and controlled atmospheres: Do it right—do it once. A Grains Industry Guide. January 2011. Reprinted June 2012, https://grdc.com.au/_data/assets/pdf_file/0025/206791/fumigating-with-phosphine.pdf

also ensure the product is used in the way that minimises the development of insect resistance and increase its usable life.²⁶

Conserve On-farm

Conserve On-Farm is a grain protectant from DOW that has three active ingredients to control most major insect pests of stored grain, including the resistant lesser grain borer (LGB).

Conserve On-Farm provides six to nine months of control and has a nil withholding period (WHP).

Maximum residue limits (MRLs) have been established with key trading partners and there are no meat residue bioaccumulation issues.

Conserve On-Farm is a combination of two parts that are applied together. Using Part A and Part B together is very important to get control of the complete spectrum of insects.

Part A: 1 x 5 L of chlorpyrifos-methyl and S-methoprene – controls all stored grain insect pests other than the resistant lesser grain borer (*Rhyzopertha dominica*)

Part B: 2 x 1 L of spinosad – is very effective on the lesser grain borer, including resistant strains, but has little to no activity on other key species.²⁷

13.5 Aeration during storage

13.5.1 Dealing with high moisture grain

Key points:

- Deal with high-moisture grain promptly.
- Monitoring grain moisture and temperature regularly (daily) will enable early detection of mould and insect development.
- Aeration drying requires airflow rates in excess of 15 litres per second per tonne.
- Dedicated batch or continuous flow dryers are a more reliable way to dry grain than aeration drying in less-than-ideal ambient conditions.

A Department of Employment, Economic Development and Innovation (DEEDI) trial revealed that high-moisture grain generates heat when put into a confined storage, such as a silo.

Wheat at 16.5% moisture content at a temperature of 28°C was put into a silo with no aeration. Within hours, the grain temperature reached 39°C and within two days reached 46°C providing ideal conditions for mould growth and grain damage (Figure 4). Grain that is over the standard safe storage moisture content of 12.5% can be dealt with by:

- Blending — mixing high-moisture grain with low-moisture grain, then aerate.
- Aeration cooling — grain of moderate moisture, up to 15% moisture content, can be held for a short term under aeration cooling until drying equipment is available.
- Aeration drying — large volumes of air force a drying front through the grain in storage and slowly removes moisture. Supplementary heating can be added.
- Continuous flow drying — grain is transferred through a dryer, which uses a high volume of heated air to pass through the continual flow of grain.
- Batch drying — usually a transportable trailer drying 10–20 tonnes of grain at a time with a high volume of heated air, which passes through the grain and out perforated walls.

²⁶ GRDC Stored Grain information hub, K-Obiol Combi. <http://storedgrain.com.au/k-obiol-combi/>

²⁷ GRDC Stored Grain information hub, Conserve On-farm. <http://storedgrain.com.au/conserv-farm/>

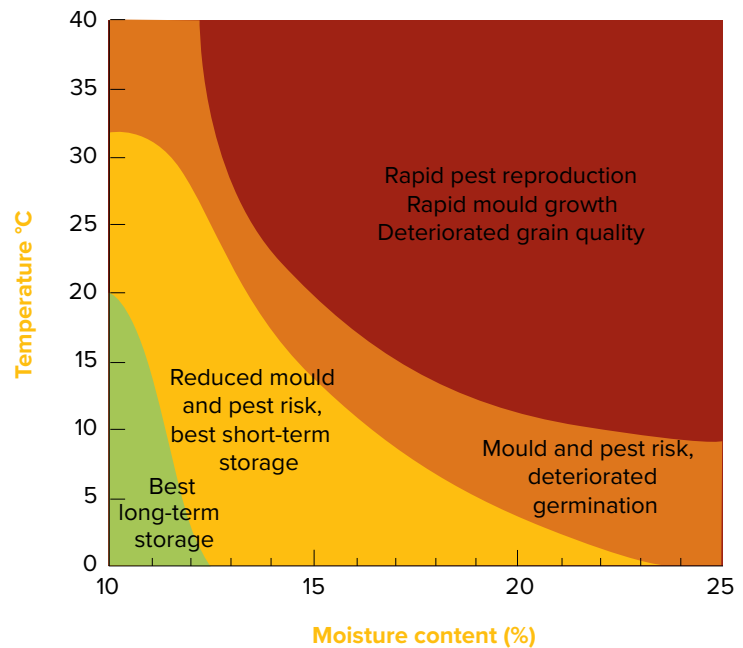


Figure 4: Effects of Temperature and moisture on stored grain.

Source: CSIRO Ecosystems Sciences in [GRDC](#)

13.5.2 Aeration cooling

Key points:

- Grain temperatures below 20°C significantly reduce mould and insect development.
- Reducing grain temperature with aeration cooling protects seed viability.
- Controlling aeration cooling is a three-stage process — continual, rapid and then maintenance.
- Stop aeration if ambient, relative humidity exceeds 85%.
- Automatic grain aeration controllers that select optimum fan run times provide the most reliable results.

Aeration cooling can be used to reduce the risk of mould and insect development for a month or two until drying equipment is available to dry grain down to a safe level for long-term storage or deliver. In most circumstances, grain can be stored at up to 14–15% moisture content safely with aeration cooling fans running continuously, delivering at least 2–3 litres per second per tonne. It is important to keep fans running continuously for the entire period, only stopping them if the ambient relative humidity is above 85% for more than about 12 hours, to avoid wetting the grain further.

Blending

Blending is the principle of mixing slightly over-moist grain with lower-moisture grain to achieve an average moisture content below the ideal 12.5% moisture content. Successful for grain moisture content levels up to 13.5%, blending can be an inexpensive way of dealing with wet grain, providing the infrastructure is available. Aeration cooling does allow blending in layers but if aeration cooling is not available blending must be evenly distributed (Figure 5).²⁸

28 GRDC Stored Grain Information Hub: Dealing with high moisture grain. <http://storedgrain.com.au/dealing-with-high-moisture-grain/>

TABLE OF CONTENTS

FEEDBACK

VIDEOS

WATCH: [Grain Storage Cooling Aeration.](#)



MORE INFORMATION

[GRDC Aerating Stored Grain – Industry Guide.](#)

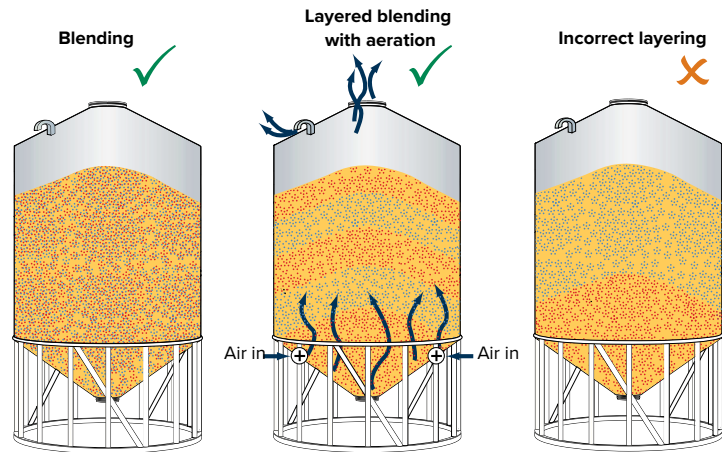


Figure 5: Diagram demonstrating the correct practices for blending.

Source: Kondinin Group in [GRDC](#)

Seed viability

Research trials reveal that cereal grain at 12% moisture content stored for six months at 30–35°C (un-aerated grain temperature) will have reduced germination percentage and seedling vigour.

13.5.3 Aeration drying

Aeration drying relies on a high air volume and is usually done in a purpose-built drying silo or a partly filled silo with high-capacity aeration fans. Aeration drying is a slow process and relies on four keys:

- High airflow rates.
- Well-designed ducting for even airflow through the grain.
- Exhaust vents in the silo roof.
- Warm, dry weather conditions.

It is important to seek reliable advice on equipment requirements and correct management of fan run times, otherwise there is a high risk of damaging grain quality.

High airflow for drying

Unlike aeration cooling, aeration drying requires high airflow, in excess of 15 L/s/t, to move drying fronts quickly through the whole grain profile and depth and carry moisture out of the grain bulk. As air passes through the grain, it collects moisture and forms a drying front. If airflow is too low, the drying front will take too long to reach the top of the grain stack – often referred to as a ‘stalled drying front.’ Providing the storage has sufficient aeration ducting, a drying front can pass through a shallow stack of grain much faster than a deep stack of grain. As air will take the path of least resistance, make sure the grain is spread out to an even depth.

Ducting for drying

The way to avoid hot spots is with adequate ducting to deliver an evenly distributed flow of air through the entire grain stack (Photo 13). A flat-bottom silo with a full floor aeration plenum is ideal providing it can deliver at least 15 L/s/t of airflow. The silo may only be able to be part filled, which in many cases is better than trying to dry grain in a cone-bottom silo with insufficient ducting.

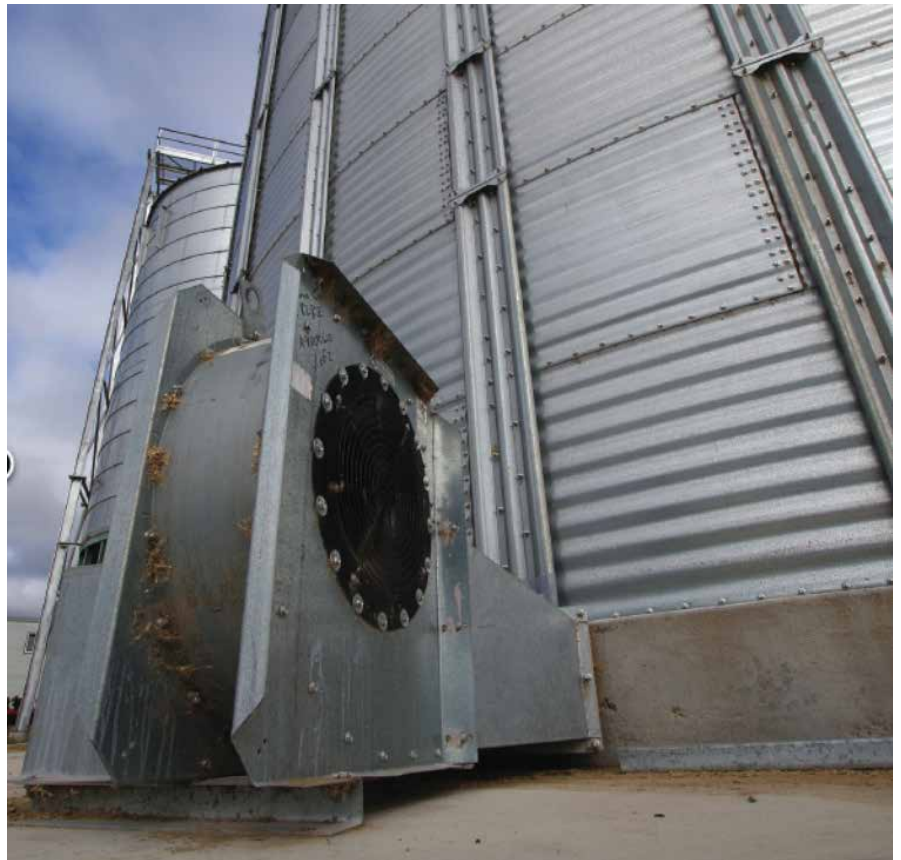


Photo 13: Aeration drying requires careful management, high airflow rates, well designed ducting, exhaust vents and warm, dry weather conditions.

Source: GRDC

Venting for drying

Adequate ventilation maximises airflow and allows moisture to escape rather than forming condensation on the underside of the roof and wetting the grain on the top of the stack. The amount of moisture that has to escape with the exhaust air is 10 L for every one per cent moisture content removed per tonne of grain.

Weather conditions for drying

For moisture transfer to occur and drying to happen, air with a lower relative humidity than the grain's equilibrium moisture content must be used. For example, Table 4 shows that grain at 25°C and 14% moisture content has an equilibrium point of the air around it at 70% relative humidity. In order to dry this grain from its current state, the aeration drying fans would need to be turned on when the ambient air was below 70% relative humidity.

Phase one of drying

Aeration drying fans can be turned on as soon as the aeration ducting is covered with grain and left running continuously until the air coming out of the top of the storage has a clean fresh smell. The only time drying fans are to be turned off during this initial, continuous phase is if ambient air exceeds 85% relative humidity for more than a few hours.

Phase two of drying

By monitoring the temperature and moisture content of the grain in storage and referring to an equilibrium moisture table, such as Table 4, a suitable relative humidity trigger point can be set. As the grain is dried down the equilibrium point will also fall,

VIDEOS

WATCH: [Aeration drying – getting it right.](#)



MORE INFORMATION

[Dealing with high moisture grain.](#)

so the relative humidity trigger point will need to be reduced to dry down the grain further. Reducing the relative humidity trigger point slowly during phase two of the drying process will help keep the difference in grain moisture from the bottom to the top of the stack to a minimum, by ensuring the fans get adequate run time to push each drying front right through the grain stack.

Table 4: *Equilibrium moisture content for wheat.*

Relative humidity (%)	Temperature			Grain moisture content (%)
	15	25	35	
30	9.8	9.0	8.5	
40	11.0	10.3	9.7	
50	12.1	11.4	10.7	
60	13.4	12.8	12.0	
70	15.0	14.0	13.5	

Note: values may be different for triticale grain.
Source: GRDC

Supplementary heating

Heat can be added to aeration drying in proportion to the airflow rate. Higher airflow rates allow more heat to be added as it will push each drying front through the storage quick enough to avoid over heating the grain close to the aeration ducting. As a general guide, inlet air shouldn't exceed 35°C to avoid over heating grain closest to the aeration ducting.

Cooling after drying

Regardless of whether supplementary heat is added to the aeration drying process or not, the grain should be cooled immediately after it has been dried to the desired level.²⁹

13.5.4 Aeration controllers

Aeration controllers manage both aeration drying, cooling and maintenance functions in up to ten separate storages (Photo 14). The unit takes into account the moisture content and temperature of grain at loading, the desired grain condition after time in storage and selects air accordingly to achieve safe storage levels.

A single controller has had the ability to control the diverse functions of aeration: cooling, drying and maintenance. The controller can not only combine the ability to control all three functions, but automatically selects the correct type of aeration strategy to obtain the desired grain moisture and temperature.³⁰

Research has shown that with the support of an aeration controller, aeration can rapidly reduce stored grain temperatures to a level that helps maintain grain quality and inhibits insect development.

During trials where grain was harvested at 30°C and 15.5% moisture, grain temperatures rose to 40°C within hours of being put into storage.

An aeration controller was used to rapidly cool grain to 20°C and then hold the grain between 17–24°C during November through to March.

Before replicating similar results on farm, growers need to:

- Know the capacity of their existing aeration system.
- Determine whether grain requires drying before cooling can be carried out.

²⁹ GRDC Stored Grain Information Hub: Dealing with high moisture grain. <http://storedgrain.com.au/dealing-with-high-moisture-grain/>

³⁰ GRDC. (2007). Ground Cover Issue 57 – New Generation in aeration controller. <https://grdc.com.au/resources-and-publications/groundcover/ground-cover-supplements/ground-cover-issue-57-grain-storage-supplement/new-generation-aeration-controller>

SECTION 13 TRITICALE

TABLE OF CONTENTS

FEEDBACK

- Understand the effects of relative humidity and temperature when aerating stored grain.
- Determine the target conditions for the stored grain.

VIDEOS

WATCH: [Aeration controllers with Philip Burrill.](#)



Photo 14: Automatic aeration controllers are the most effective way to cool grain and are designed to manage many storages, from one central control unit.

Source: [GRDC](#)