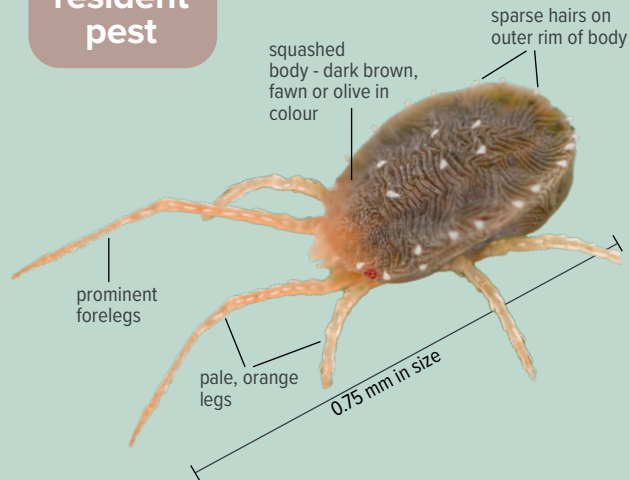


# Invertebrate Knowledge Card

## Pasture/clover mite

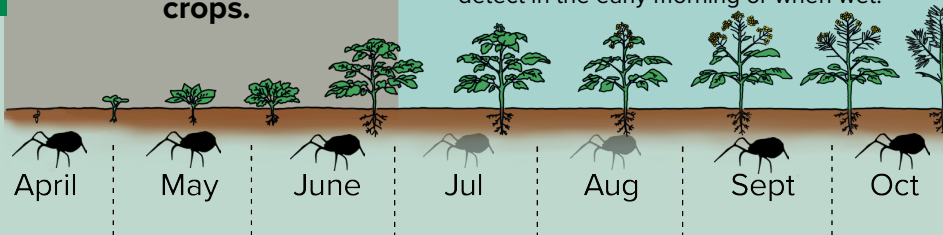
*Bryobia* spp.

resident pest



- There are multiple species of *Bryobia* mite, and most have not been researched.
- *Bryobia* species found in pastures and grain crops tend to have a natural tolerance to insecticides.
- This mite is easy to confuse with other pest mites, especially the brown wheat mite (*Petrobia latens*), which is smaller and has a more globular-shaped body.

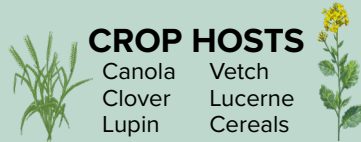
April to June is a key monitoring period due to high damage potential to emerging crops.



### Visual inspection

- Look for feeding damage and for mites on leaves.
- Use a hand lens.
- Prefers warm conditions - may be difficult to detect in the early morning or when wet.

### CROP HOSTS



Prefers Mediterranean climate. Found in most of southern mainland Australia. Also recorded in Tasmania and Queensland.



Mostly active during the day

Stippling & trails of whitish-grey dots

