

YARRAWONGA, VIC
TUESDAY 18

BENDIGO, VIC
WEDNESDAY, 19

JUNE, 2024

HIGH PERFORMING FARMS FARM BUSINESS UPDATE



Yarrawonga VIC, Tuesday 18 June 2024

The Sebel, 40 Silverwoods Boulevard

Bendigo VIC, Wednesday 19 June 2024

The Conservatory, All Seasons Resort
171 McIvor Road

9:30 am to 3:15 pm (doors open at 9.00 am for a 9.30 am start)

HIGH PERFORMING FARMS



Reanna Browne,
Work Futures

KEYNOTE: Identify, prepare for and leverage opportunities

A farm business strategy can position your farm for future success.

Creating a tailored farm business strategy will clarify your goals, constructively navigate the future to maximize opportunities, manage risks, and build long-term success and sustainability. With the continually evolving landscape in which grain businesses operate - Reanna shares mindset and skills you can consider for identifying, preparing for and leveraging opportunities to benefit your business.

Reanna's practical approach breaks down big picture thinking to making resilient decisions and acting with clarity in the present.



Jemma Pearl
*Agriculture
Victoria*



Dale Boyd
*Agriculture
Victoria*

Investigate, Understand, Plan – emissions profiles for grain producers

Agriculture contributes to greenhouse gas emissions through various activities.

By implementing some low hanging fruit strategies, farms can improve carbon emissions efficiency, enhance sustainability, while maintaining productivity and profitability.

Considering carbon emissions, can be a trigger for farmers to improve resource efficiency and benefits to farm business sustainability over the long term. Jemma and Dale will focus on the key learnings taken from working through emissions profiles and plans for cropping operations across Victoria.



GREAT FARMS TO WORK ON

Positive, productive communication language and techniques

Are you under the influence of someone else's emotion?

Emotional Resilience equips people with proactive strategies to help manage their daily stresses, successfully changing perspective and creating new patterns of behaviour. You may not be able to change people and

circumstances, but Emotional Resilience will teach you how to respond as a circuit breaker for blame and judgement.

Dr Jane Foster will discuss how feeling emotions is necessary to healthy human interactions, and how to channel them in a positive direction.



Dr Jane Foster,
Emotional Resilience

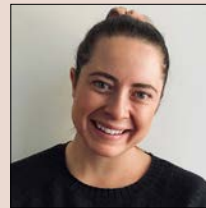
Delegation do's – for effectively managing your time

Delegation is essential for scaling up operations and accommodating growth within the modern farm operation.

By building a team capable of handling diverse tasks and responsibilities, farm managers can create the space to adapt to changing circumstance and grasp opportunities for

expansion. Through mastering the art of delegation managers can build trust and motivation by supporting autonomy of individuals to get the job done.

Claudia will outline in practice, how through sharing responsibilities, individuals can maintain a healthier work-life balance.



Claudia Mitchell,
The Capacity Co.

Innovative rewards for employees that make cents

Investing in employee recognition and appreciation can yield significant returns in terms of employee engagement, retention, and overall team success.

Industry Case Study



Eric Nankivell
Farmanco



Ben Percy
Farmanco

The future of grain production – in search of sustainable above average profit

Achieving sustainable above-average profit involves a combination of strategic planning, efficient operations, innovation, and a commitment to sustainability. Reaching beyond maximising short-term profits, ensuring the long-term optimal performance of crop rotations and farm asset investments.

Eric and Ben will explore how to analyse your resources and capabilities, evaluating and adapting the farming system to yield above average profitability and sustainability over the long term.



Rob Dawes
AgProcure

Proactive procurement practices – managing cost and risk

Join ag procurement specialist, Rob Dawes, for a timely market update on input pricing and supply supply chains. Strategic procurement of agricultural inputs involves a comprehensive approach that includes understanding needs, evaluating suppliers, managing costs, and mitigating risks. By adopting best practices in procurement, growers can lock down a steady supply of high-quality inputs, reduce costs, and enhance the sustainability of their operations.

Click to register for Yarrowonga

Click to register for Bendigo

Enquiries: ORM Pty Ltd
03 5441 6176 or email admin@orm.com.au

\$30 per person (GST inc.)
Morning tea, lunch and booklet included

