

GRAINS RESEARCH UPDATE 2025



Skipton Golf and Bowls Club

26 Rokewood - Skipton Road, Skipton VIC

Cost: Free event. Please register for catering purposes.

Doors open 8.30am for a 9.00am start.
Finish 1.00pm

Morning tea, lunch and proceedings provided.

[Register Here](#)

For further information, please contact admin@orm.com.au.

Discuss the latest farm-ready information to improve profit with researchers, agronomists and leading growers at the Skipton GRDC Grains Research Update.

Topics:

- A deeper understanding of nitrogen cycling and enhanced efficiency fertilisers with **Helen Suter, University of Melbourne**
- Which climate drivers affect south west Victoria and when are they most active? with **Dale Grey, Agriculture Victoria**
- Nutrition management for high rainfall crops at risk of waterlogging with **Malcolm McCaskill, Agriculture Victoria**
- Crop flowering calculator, an online tool to optimise sowing date for wheat, barley and canola with **Jeremy Which, CSIRO**
- Toxicity on beneficial insects and opportunities for parasitoid wasp control of aphids with **Lilia Jenkins, CESAR**

GRAINS RESEARCH UPDATE 2025



9.00am to 1.00pm (doors open at 8.30am for a 9.00am start)



A deeper understanding of nitrogen cycling and enhanced efficiency fertilisers with Helen Suter, University of Melbourne

Helen will explain how nitrogen moves through a soil profile and how products such as green ammonia impact efficiency and effectiveness of N use.



Which climate drivers affect south west Victoria and when are they most active? with Dale Grey, Agriculture Victoria

Join Dale as he steps through which climate drivers we should look for and which drivers reduced growing season rainfall in 2024.



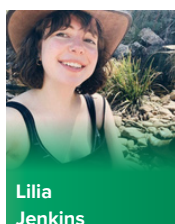
Nutrition management for high rainfall crops at risk of waterlogging with Malcolm McCaskill, Agriculture Victoria

Inefficiencies in our nitrogen application has a financial, leaching and greenhouse gas emissions affect. Malcolm will discuss trials highlighting how best to manage nitrogen on crops at risk of waterlogging.



Crop flowering calculator, an online tool to optimise sowing date for wheat, barley and canola with Jeremy Whish, CSIRO

Flowering time is critical to mitigate risks associated with frost and dry finishes. Hear Jeremy discuss the Crop Flowering Calculator to assist in sowing and variety management decisions.



Toxicity on beneficial insects and opportunities for parasitoid wasp control of aphids with Lilia Jenkins, CESAR

Considering implementing integrated pest management practices? This presentation will cover toxicity of chemicals to beneficial insect, and how parasitoid wasps can be used to reduce aphid numbers.

Agenda subject to change